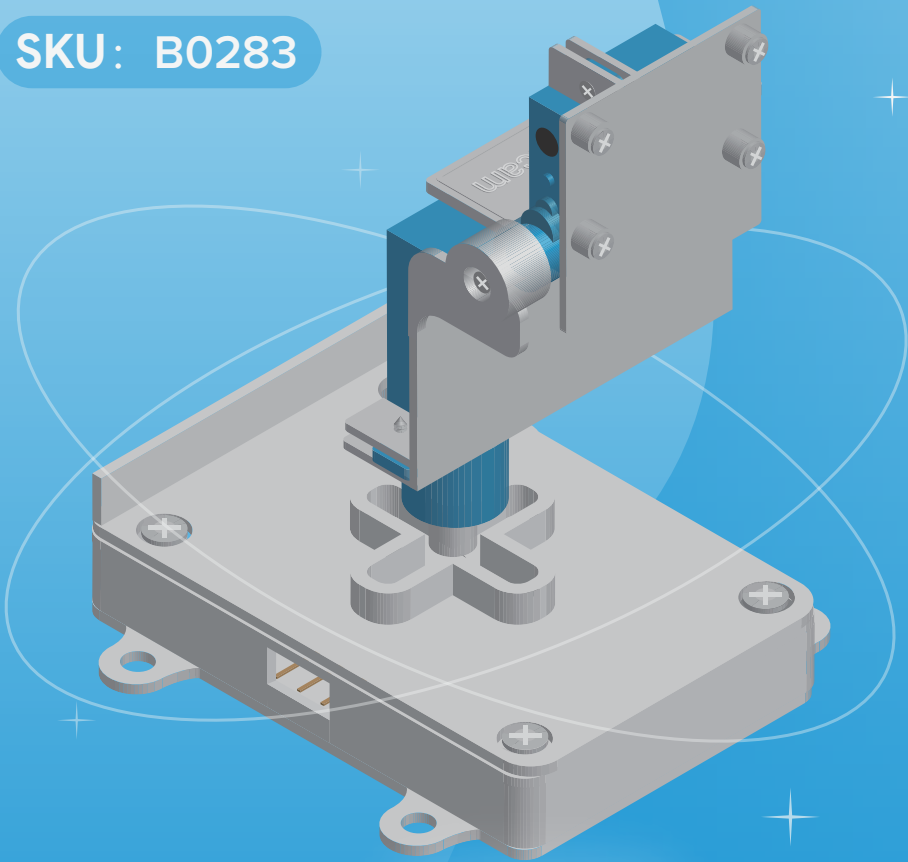


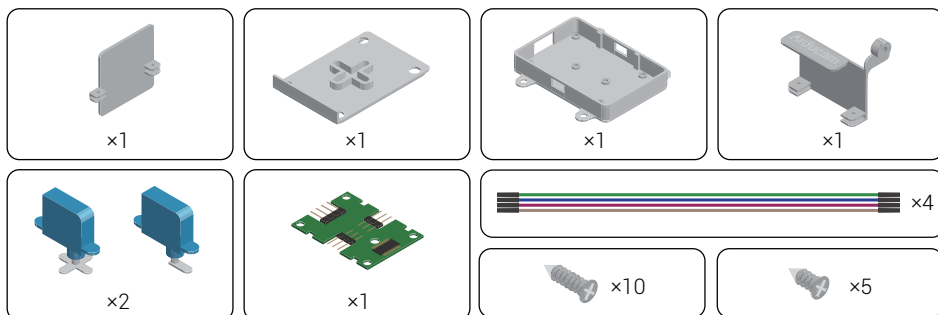
Pan-Tilt Kit for Raspberry Pi Cameras

Getting Started

SKU: B0283



Packing List

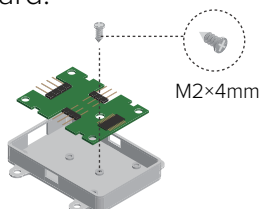


Installation

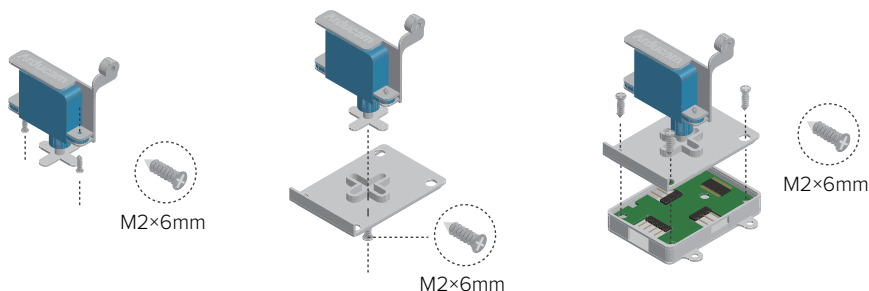


- The kit is compatible with the official camera module V1, V2, HQ and Arducam Pi cameras with same form factors.
- Keep the servo arms in the original position so no further calibration is required.
- Turn off your Raspberry Pi and disconnect the power supply.

1. Install the controller board.



2. Install the pre-assembled pan servo.

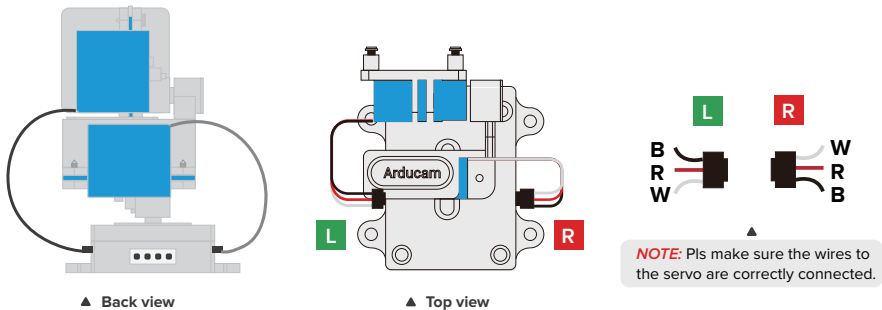


Installation

3. Install the pre-assembled tilt servo.



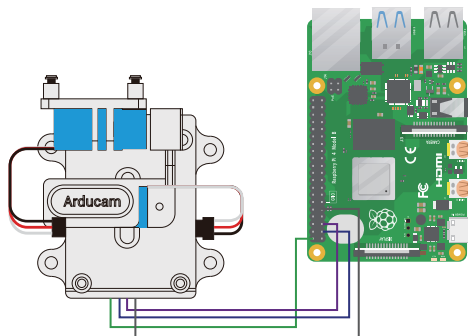
4. Connect the servos to the controller board.



5. Connect the pan-tilt kit to your Raspberry Pi.



Follow the servo motors' wire colors but not the jumper wires! The colors of the jumper wires are used to distinguish between each other only and do not need to be matched in real wire connection to the Raspberry Pi.



Operating the Pan-Tilt Kit

1. Clone demo code

```
git clone https://github.com/ArduCAM/PCA9685.git
```

2. Enter the target directory

```
cd PCA9685/
```

3. Compile the code

```
make
```

4. Run the demo

```
sudo ./RunServoDem
```

Use the arrow keys on the keyboard to control the camera pan and tilt direction.

Visit us at
www.arducam.com

Raspberry Pi and the Raspberry Pi logo are trademarks of the Raspberry Pi Foundation